



“Britain needs Ewe” 2010 Collection - Hand-knitted, Woad dyed.



“Britain needs Ewe” 2010 Collection - Hand-knitted, onion skin dyed.

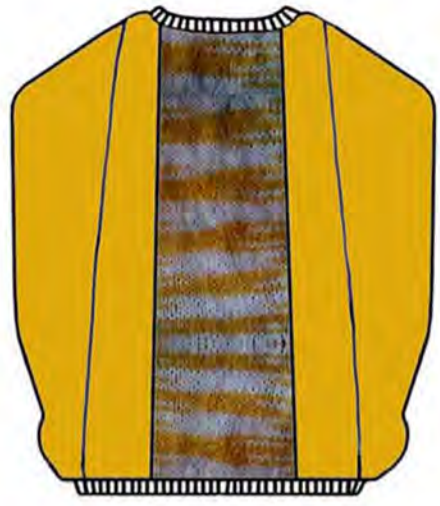


“Britain needs Ewe” 2010 Collection - Woad + Weld dyed.

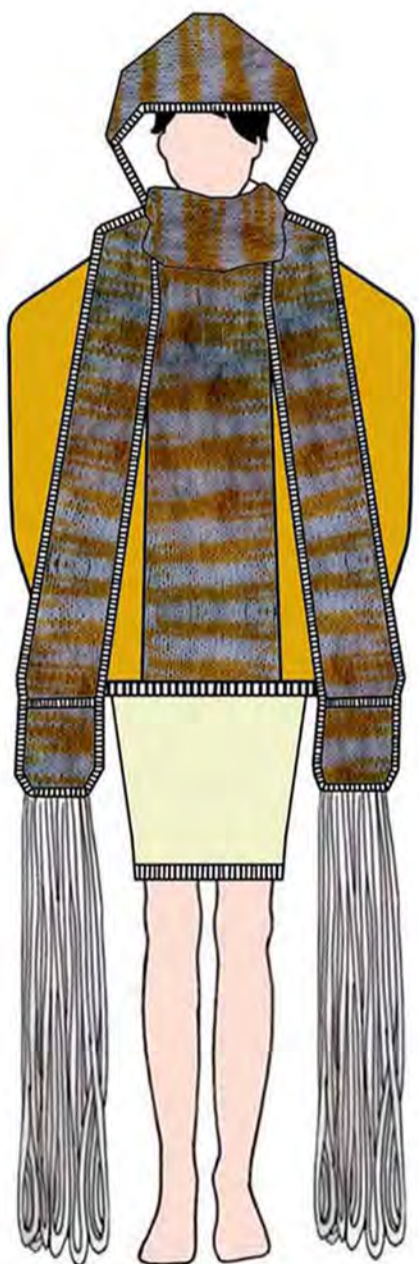


“Britain needs Ewe” 2010 Collection - Hand-knitted, Madder dyed.

DRASTIC LOCALITY - BRITAIN NEEDS EWE...



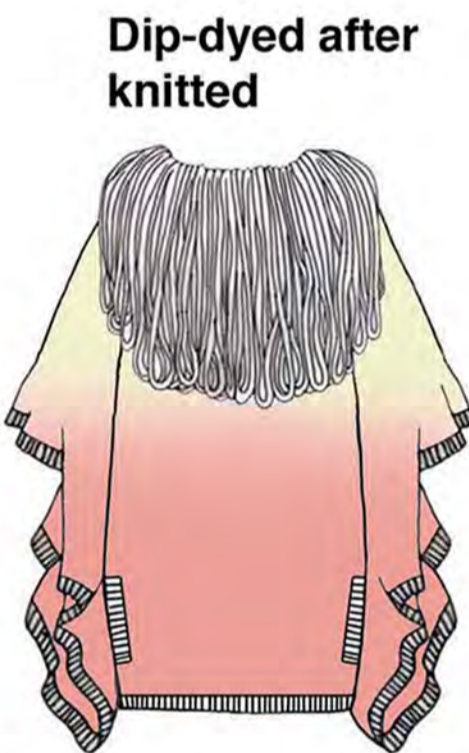
Wide volumous hood



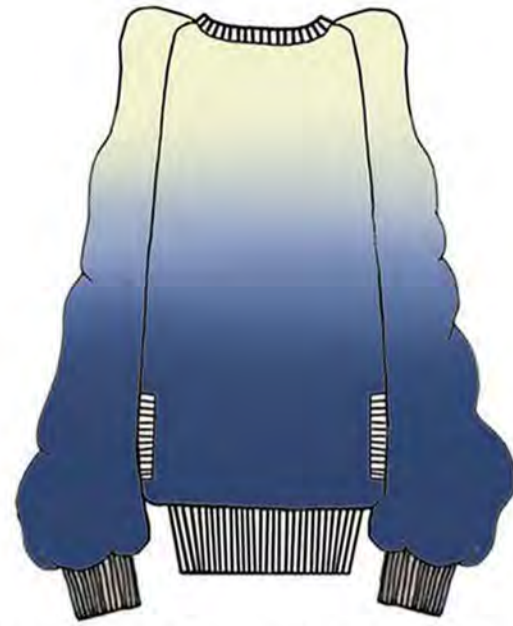
Onion skin dip-dyed yarn knitted into geometric pattern



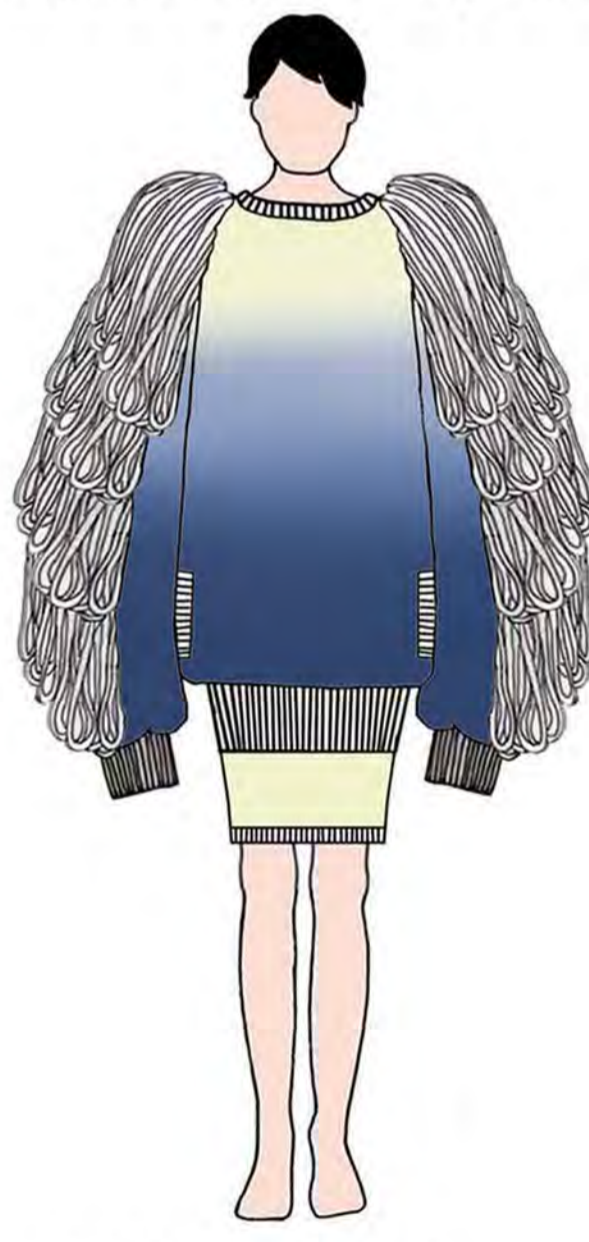
Loops will be dip dyed



Completely overpowering



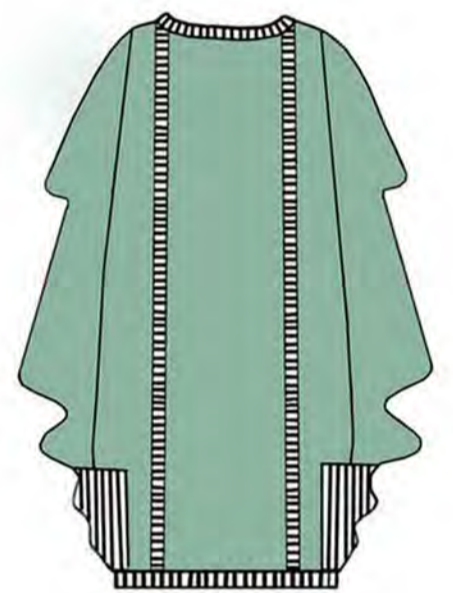
Hand dyed using British dyes



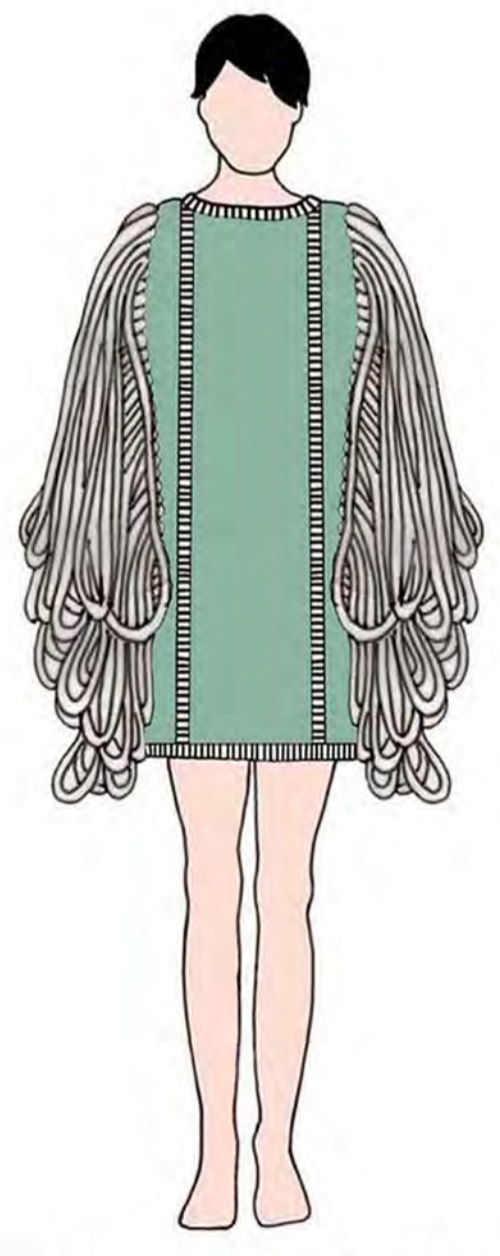
Leather buckles fasten looped panels



Knitted shoulder pads



Detachable pockets



Structure needed to support knitting

Unfastened at shoulders

Detachable layers of loop knitting



“Britain needs Ewe” 2010 Collection - Sheep Shearing fleece for yarn.



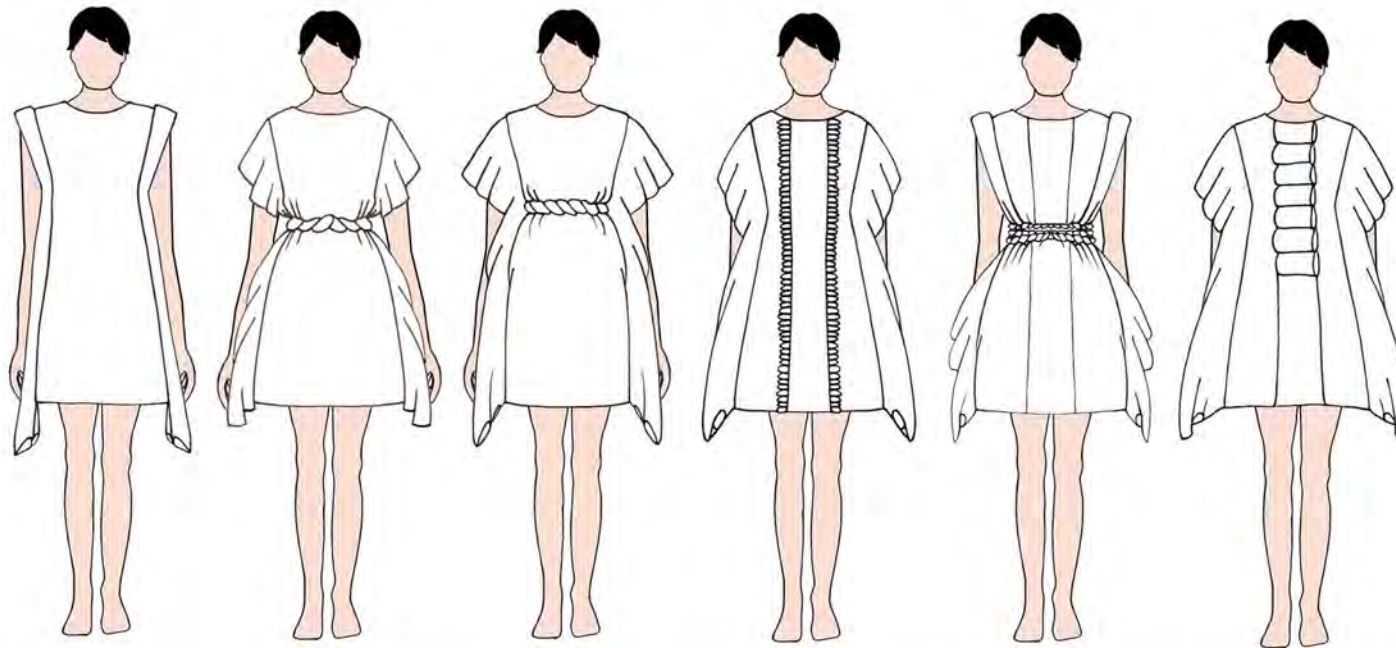
“Britain needs Ewe” 2010 - Design development line-up.



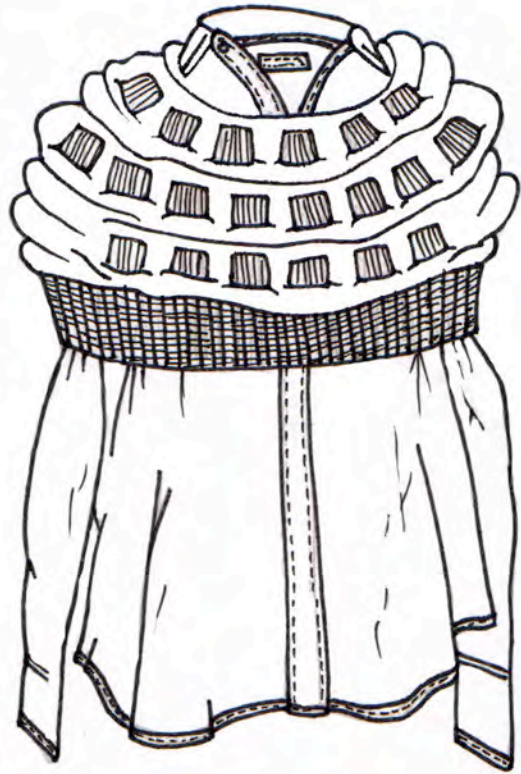
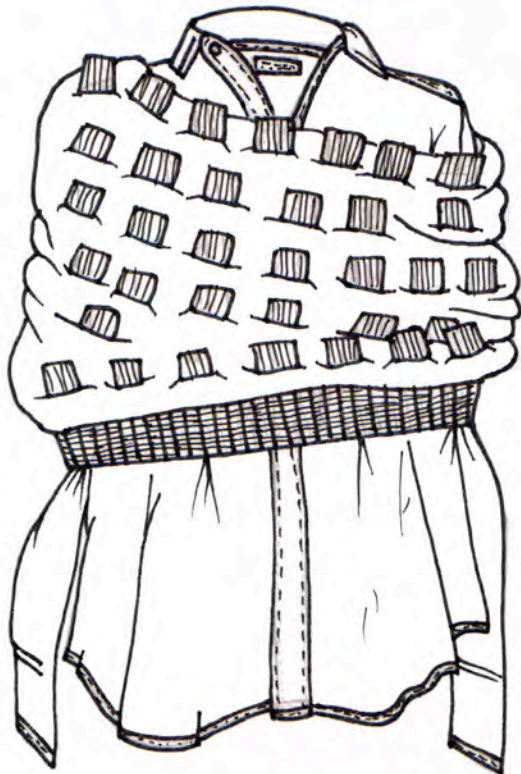
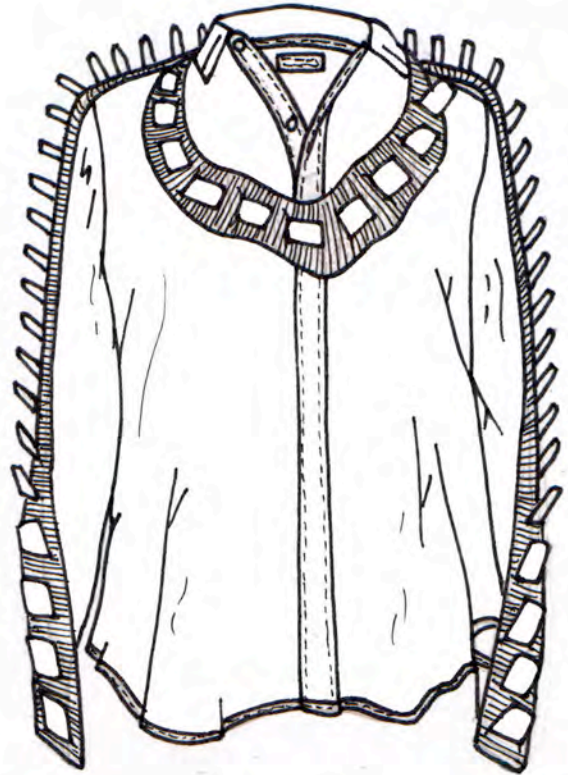
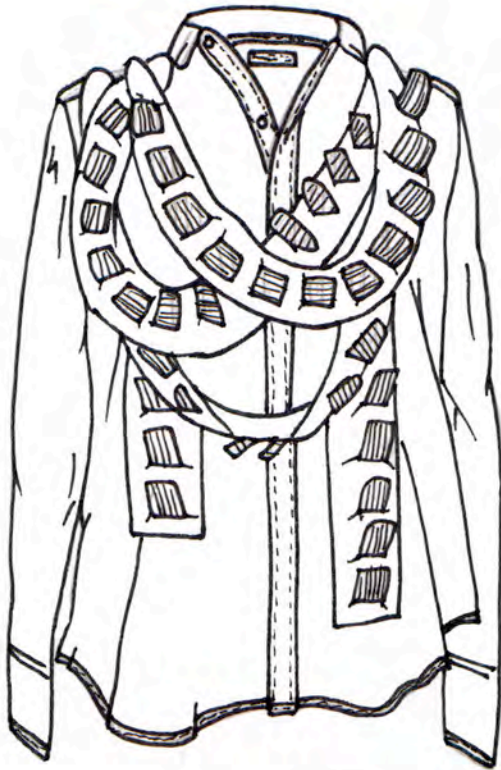
Neighbourhoodies 2010 Project - in collaboration with Otto Von Busch



“Turn out your pockets” 2010 - Hidden comfort and total practicality.

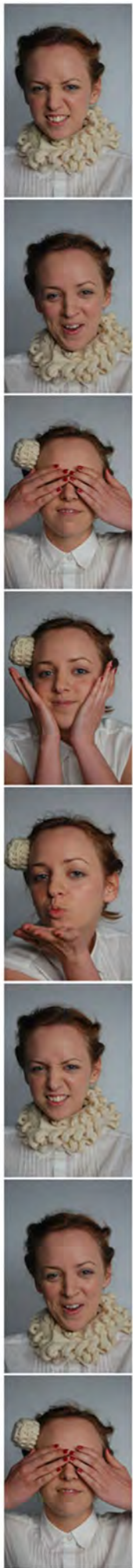


Silk Tunic Collection 2009 - Using simple cuts and shapes blended with intricate accessories for luxurious practicality.



Tailored shirt collection - combining recycled wool with cotton detailings.





“Make Do Redo Mend” - 2009 Collection Transitional Film.

DATE

TOPIC

TD4E

3

TO DO



LIME NECK RUFFLE

HOW TO → Using 5½ mm needles CAST ON 48

ROWS 1, 2, 5 - knit to end

ROW 3 - Slip 1, knit 1, *increase 1, knit 1 repeat from * (94)

ROW 4 + 6 - Slip 1, Purl to end

ROW 7 - Slip 1, *increase 1, knit 2 repeat from * (141)

ROW 8, 10, 12, 14, 16, 18 - Slip 1, purl to end

ROW 9, 13, 17, 19, 20 - Slip 1, knit to end

ROW 11 - Slip 1, *increase 1, repeat from * (211)

ROW 15 - Slip 1, knit 1, *increase 1, repeat from * (315)

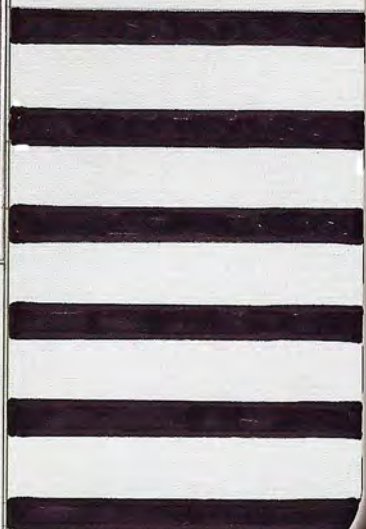
CAST OFF + SEW IN ENDS

USE COLOUR IN ROWS 2+3 FOR STRIPED EFFECT

SEW POPPERS ON AT 1½ INCHES TO FIT NECK FASTENINGS



CONTACT



MAKEDOREDOND



“Make Do Redo Mend” 2009 Collection - Final shirt line-up.



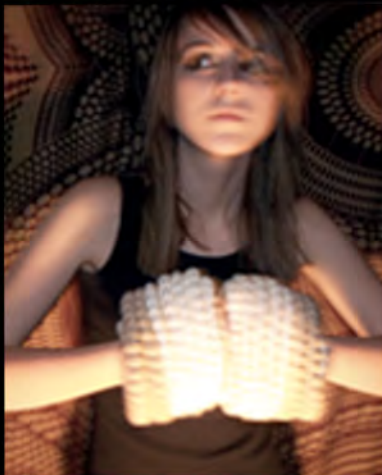
“Make Do Redo Mend” 2009 Collection - Final Skirt line-up.



“Make Do Redo Mend” - 2009 Collection - Knit and Woven Mix.



“Make Do Redo Mend” 2009 Collection - Knit and Woven Mix.



RE:KNIT:ABLE PROJECT



UseLess Technology - 2008 - Knit and Woven Textile Collection.



Urbis Art Gallery Catwalk Show - 2009 - Textile Design for Fashion.